

Around

SPRING 2008 VOLUME 1, NO. 2 \$4.95

CONCORD

community · culture · lifestyle

*Celebrate
Spring*

**GET READY
TO GARDEN**
tools, tips & trends

**MILL BROOK
GALLERY &
SCULPTURE GARDEN**
experience the magic

MARY BAKER EDDY
at pleasant view





ALERT DEER
BY WENDY KLEMPERER, STEEL



UNCOILING BY
ROBERT LEMING,
ACRYLIC AND
STAINLESS STEEL



The downstairs gallery at

BY LORI MIRAZITA



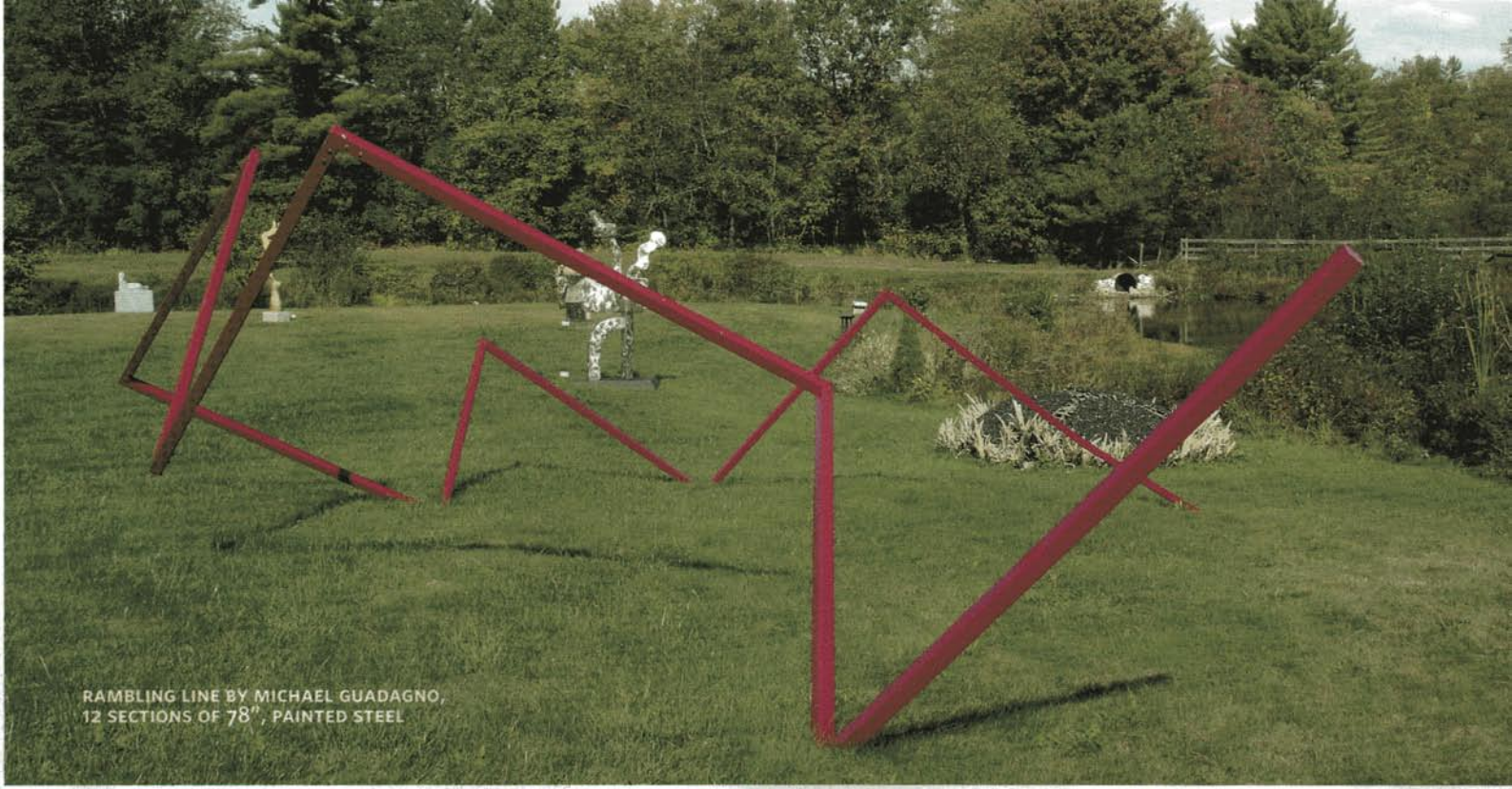
Magical Mill Brook

WHERE ART AND NATURE MEET

One never knows when, or from where, inspiration will arise. For Pam Tarbell, owner and founder of Concord's Mill Brook Gallery & Sculpture Garden, a new calling came through the innocent comment of a young art student. "I taught after-school art classes in my studio to first through eighth graders for ten years," explains Tarbell, "from painting and sculpture to printmaking and drawing. Early in the process, I realized that the kids had little or no historical knowledge of art, so I began weaving art history into most classes. One day one of the kids told me that the only sculpture he'd seen before then were the statues in front of the state capitol." ►

PHOTOGRAPH BY JOSEPH ST. PIERRE

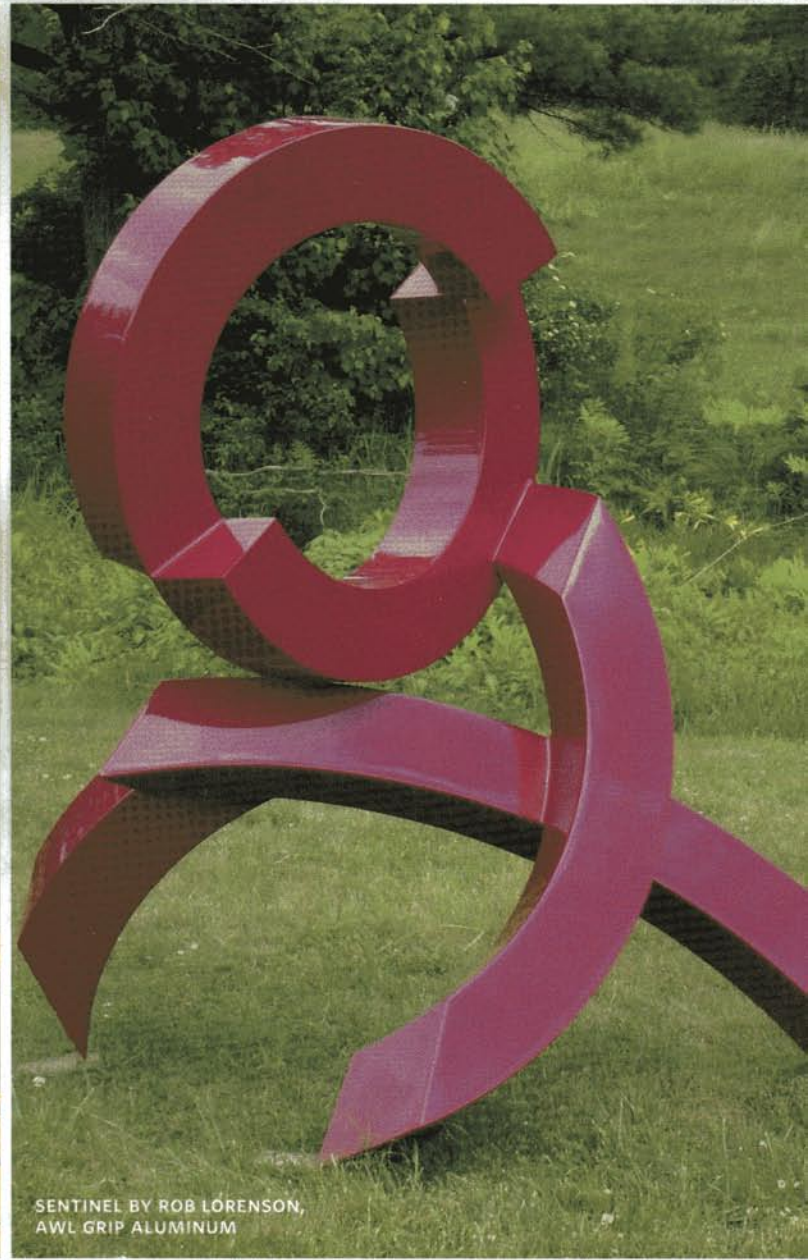
Mill Brook is full of sunlight— and beautiful art.



RAMBLING LINE BY MICHAEL GUADAGNO,
12 SECTIONS OF 78", PAINTED STEEL



SILVER MAPLE
BY PETER GRANUCCI, OIL, 85" x 54"



SENTINEL BY ROB LORENSEN,
AWL GRIP ALUMINUM



PATRONESS BY
KATHLEEN BRENNAN,
BRONZE

MOTHERLY DEVOTION
BY NANCY DIEFENBACH,
VERMONT MARBLE



PAM TARBELL

PHOTOGRAPH BY JOSEPH ST. PIERRE

A New Venture

That one little aside set Tarbell on a new course: to create a place where adults and children alike could come to interact with, and learn about, the visual arts. One year later, after multiple meetings with the city's zoning board, Tarbell got the green light to open a gallery at her home on Hopkinton Road, and the Mill Brook Gallery & Sculpture Garden was born.

Since opening her gallery in 1994, Tarbell has worked tirelessly to promote the visual arts in and around Concord. A graduate of the Rhode Island School of Design and practicing artist herself, she is keenly aware of how hard artists work to remain true to their calling and at the same time make ends meet. "We have very gifted artists right in this region," asserts Tarbell. "They need exposure and the public needs more information on the incredible creative talent here."

Tarbell represents artists working in pottery, photography, glass art, jewelry, painting, printmaking, and sculpture. Prices in the gallery are similarly diverse, from \$50 and up. Tarbell showcases her artists through an active schedule of exhibitions which change regularly—there are no permanent installations in the three indoor galleries or on the grounds—thereby ensuring visitors a new experience each time they visit.

Indoors and Out

While offerings in the indoor gallery reflect a wide variety of styles, media, and subject matter, works in the sculpture garden tend to be more contemporary. Tarbell represents sculptors of national, and in some cases international, renown. Each year she mounts an invitational outdoor sculpture exhibit featuring works by 20 or more artists that has proven to be a perennial favorite with visitors and participants alike. "I have artists from past years' exhibits recommending other artists and simultaneously assuring me that they'll be back next year," notes Tarbell. "I also receive enthusiastic responses from visitors to the exhibition. People who might turn away from contemporary paintings are often drawn to contemporary sculpture. They love the fact that they can walk all around the works and see how they're constructed. It's a wonderful, interactive experience."

Nor does Tarbell's commitment to promoting the arts stop at her own gallery's doors. She serves as a trustee for both the League of New Hampshire Craftsmen (www.nhcrafts.org) and New Hampshire Citizens for the Arts (<http://www.nhcfca.org>). Additionally, Tarbell is a member of the New Hampshire Art Association and the New Hampshire Women Caucus on the Arts and a participant in the City of Concord's Arts and Cultural

*Mill Brook's
upstairs gallery
features an ever-
changing selection
of paintings and
sculptures.*

ANDY MOERLEIN

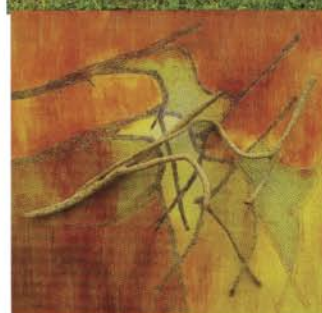
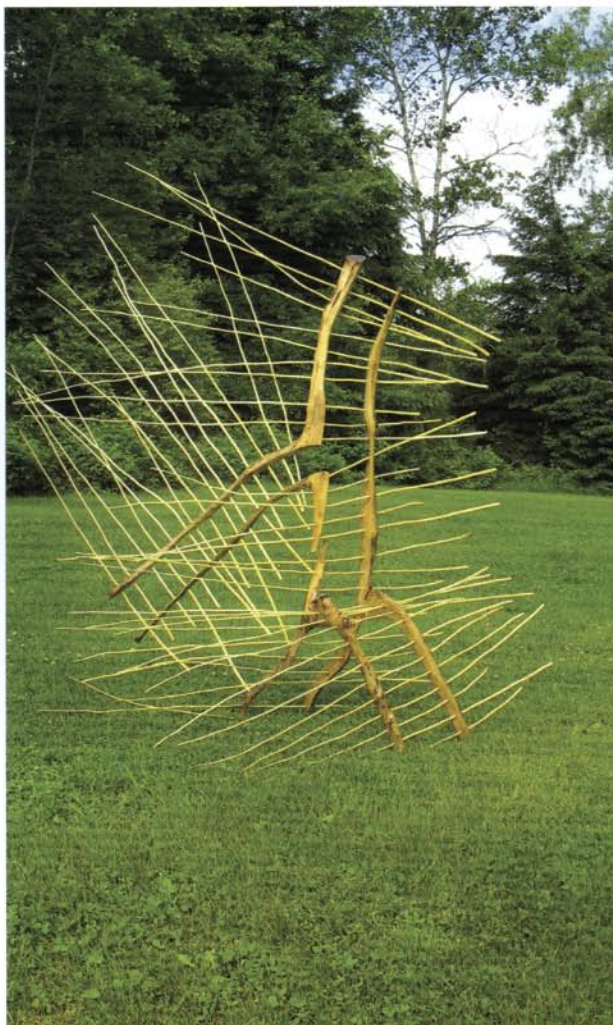
Exhibit at Mill Brook April 1-May 4

Sculptor Andy Moerlein's works exude mystery. These powerful, totemic pieces command whatever space they occupy while simultaneously communicating sensitivity to their environment. Contemplating the luminous orbs of "Essence" as they hover above the landscape or tiptoeing forward to investigate the mysterious "Device for Capturing Moonlight" as it emits its soft moans and cries, one is struck by how 'right' each piece feels in nature.

"Every piece has its conception outdoors," explains Moerlein. "I may find a living limb or an inviting stone that becomes the material of an idea, or I may see an actual event and seek to recreate that memory. Whatever the inspiration, my work is grounded in the landscape, both physically and emotionally."

In creating his works, Moerlein combines natural materials—branches, minerals, stones—with more contemporary elements such as fiberglass and sound. The resulting sculpture is strikingly modern, yet at the same time almost primitive in appearance.

Moerlein's works have been featured in shows throughout the U.S. In recent years, he has exhibited at the Hood Museum in Hanover, NH; the Mill Brook Gallery in Concord, NH; the Derryfield School in Manchester, NH; the Rockwell Museum in Stockbridge, MA; and the Andres Institute of Art in Brookline, NH. In addition to pursuing his artistic career, Moerlein also works as an art teacher and gallery manager at the Derryfield School in Manchester, NH. His next exhibition of new indoor sculpture, *Sticks, Stones & Fiber Glass: Small Sculpture by Andy Moerlein*, will be on view at the Mill Brook Gallery & Sculpture Garden from April 1 through May 4, 2008; a reception will be held on Sunday, April 23 from 2–5 p.m.



NEW HAMPSHIRE CITIZENS FOR THE ARTS (NHCFA)

Today's policymakers are grappling with such pressing issues as the economy, healthcare, and the war in Iraq. A group of concerned citizens in New Hampshire wants to make sure there's another issue front and center for them as well: Support for the arts.

New Hampshire Citizens for the Arts (NHCFA) is dedicated to educating local, state, and federal policymakers as well as the general public to the importance of the arts in

New Hampshire. The group is committed to expanding opportunities for every citizen to participate in the cultural life of the state. Their activities include the promotion of forums and workshops to educate citizens on advocacy or present issues, as well as testimony on cultural issues before the legislative committees.

This year, with the national election dominating the public's attention, NHCFA has joined forces with the Ameri-

cans for the Arts Action Fund's "ArtVoteNH." Their aim is to secure bold, new proposals from the 2008 presidential candidates in support of the arts and arts education in America. Members of NHCFA identified and mobilized likely arts voters and encouraged them to lobby presidential candidates to take a strong position for the arts. Evidence suggests that their efforts were rewarded. A quick glance through the "Candidate Arts Policy" section of nhcfa.

org reveals that a number of presidential contenders including Hillary Clinton, Barack Obama, and Mike Huckabee have articulated policies for supporting the arts. Art and music are now mentioned as something needing more funding in national debates, evidence of a great step forward in thinking.

For more information, log on to www.nhcfa.org and www.ArtsActionFund.org

Development Task Force. As a member of the Greater Concord Chamber of Commerce, Tarbell started ART CONCORD, an event which takes place three times a year and involves numerous area galleries which open concurrently for tours.

Artist at Work

In addition to promoting other artists, Tarbell also actively continues to create her own art. A painter, she works in mixed media and on paper and canvas, often experimenting with non-traditional mediums such as Rust-Oleum, house paints, and foil to create new effects.

"During the winter, I try to protect my time and do as much painting as possible," she notes. An avid equestrian, Tarbell took in this past fall's glorious colors on horseback, capturing the rich tonality and light of the season in a series of photos that now inform her latest creative musings. "Colorful leaves, trees, light, the environment...all of these elements play a role in my most recent works," she observes. It's not yet clear where her current creative journey will lead her, but Tarbell continues to develop her newest paintings.

"The best part of all this," concludes Tarbell, "is that my world has grown much larger—through my work in the arts I've met people from all over, artists as well as art lovers. By now most everyone's heard of the value that the creative economy brings to a community and the myriad ways in which the arts enhance the quality of life. I witness the effects firsthand. For eleven years, I've been able to run this place, not as a museum but as a gallery that supports artists." It's demanding work, Tarbell admits, yet very rewarding. "It's really wonderful to see parents and grandparents bring their kids out to see the sculpture garden. They run around, explore, play...it's not a museum...they don't have to be quiet here. It's a friendly place to visit and a place where art and nature meet." 🐞

The Mill Brook Gallery and Sculpture Garden is located at 236 Hopkinton Road in Concord, New Hampshire (2 miles west of Concord Hospital, on Rt. 202/9). For more information on the gallery and upcoming exhibitions, visit www.themillbrookgallery.com or phone (603) 226-2046.